

## Safeguarding children and young people from serious youth violence and knife crime

One of the key issues causing a high level of concern nationally (and particularly in London) is the increase in knife crime and other forms of serious youth violence.

There is growing evidence of the strong links between children going missing, serious youth violence, gang affiliation, criminal and sexual exploitation which highlights the importance of safeguarding and targeted intervention with these groups of young people.

It is important to remember that knife crime does not exist in a vacuum and children who are victims or perpetrators may also be experiencing multiple vulnerabilities.

As a school we will ensure that staff members are provided with training in these issues so that they have the knowledge and skills to recognise signs that a pupil may be vulnerable to, or potentially becoming involved in, violent behaviour or knife crime.

We will ensure that all staff are aware of the processes to be followed in the event of a serious incident involving a pupil or pupils of this school.

We will ensure that our DSLs and other key staff have received an appropriately enhanced level of training to respond effectively, take the appropriate actions and are able to support other staff members in following the expected processes.

We will ensure that systems are in place to provide effective support to any pupils (or family members of a young person eg siblings) who have been victims of a serious incident or involved in a serious incident (as a witness or participant).

We will provide support to any staff members who have been affected by a serious incident.

We will review our curriculum regularly and ensure that our pupils are provided with robust input in relation to the risks of becoming involved in gangs, carrying weapons and getting involved in criminal activities. We will ensure this curriculum input is in line with national and local guidance, is age and level-of- understanding appropriate for our pupil cohort, and will engage external contributors to provide this input where that is relevant or appropriate.

Pupils will be made aware of the dangers of grooming and criminal exploitation and how to safeguard themselves.

When concerns are emerging about any pupil or group of pupils we will make referrals to relevant and appropriate Early Help / Intervention Services.

If serious incidents or concerns arise, referrals will be made as appropriate to specialist services (eg Social Care, Police and Health, including CAMHS).

School will raise awareness with parents / carers about the dangers of grooming and criminal exploitation and parents / carers will be given advice and strategies to support them in keeping their children safeguarded.

Where there are concerns about a child or young person, their parents will be signposted to appropriate services who can work with their family to provide support and reduce risk.

We understand the need for robust multi-agency working when these instances occur and will fully engage as a school with other agencies in the Local Safeguarding Children Partnership and contribute to effective information sharing processes.

Information will be routinely and mutually shared between the school and other safeguarding partners, including the Metropolitan Police, (via the protocol and memorandum of understanding) for the purpose of safeguarding children and young people.

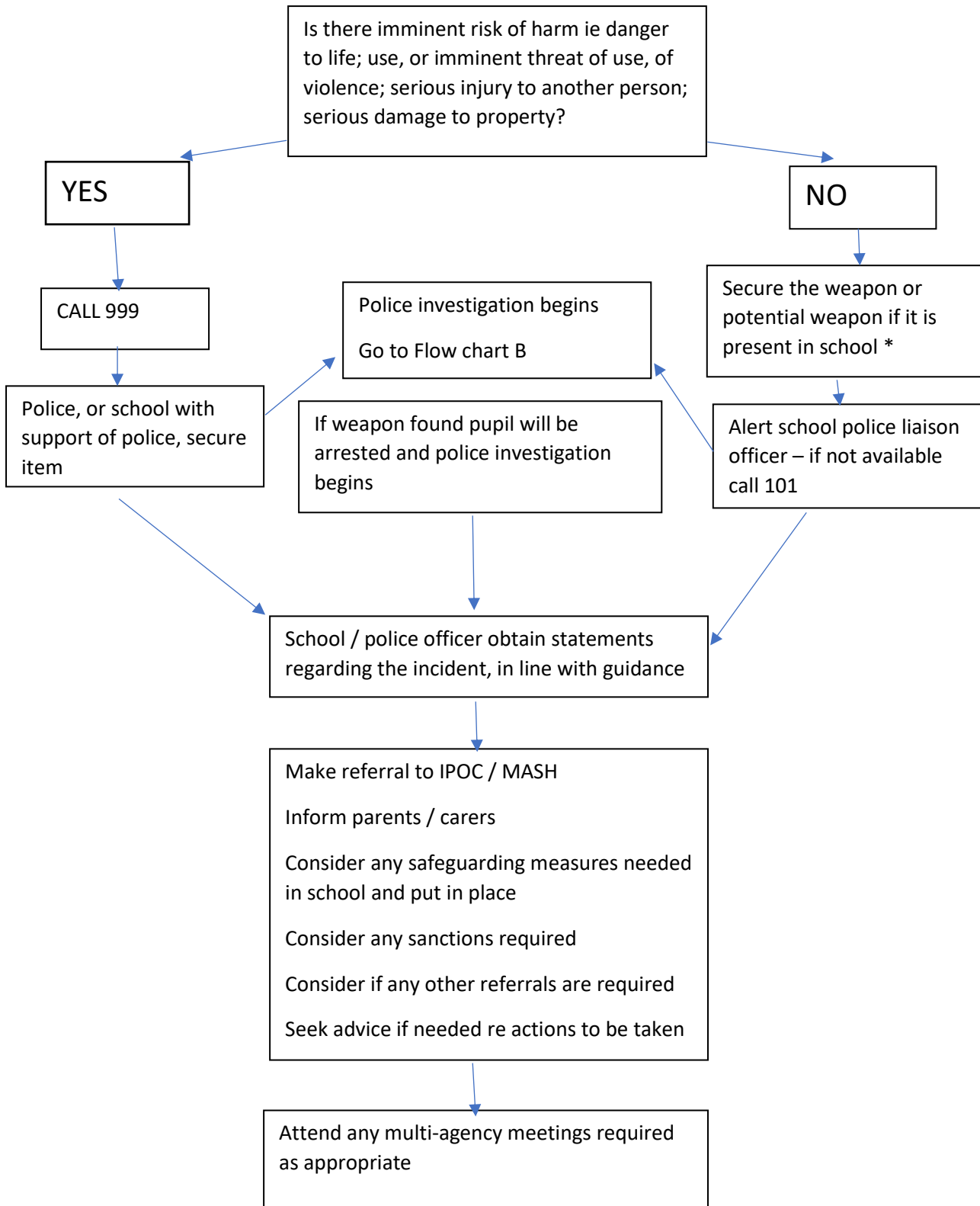
We recognise the complexity of the backgrounds and circumstances for some young people and that exclusion from school / education is a key factor in increasing the vulnerability of young people to possible exploitation or risk.

We will therefore ensure that any decisions about exclusion or managed move should balance the needs of the individual child or young person, and the safeguarding of other pupils / staff in school generally, as well as the safety of any other individual pupil who may have been harmed or placed at risk by the behaviour of another.

The Exclusion Policy of the school reflects the practice set out in the DfE statutory guidance and the LA strategic response to permanent exclusions.

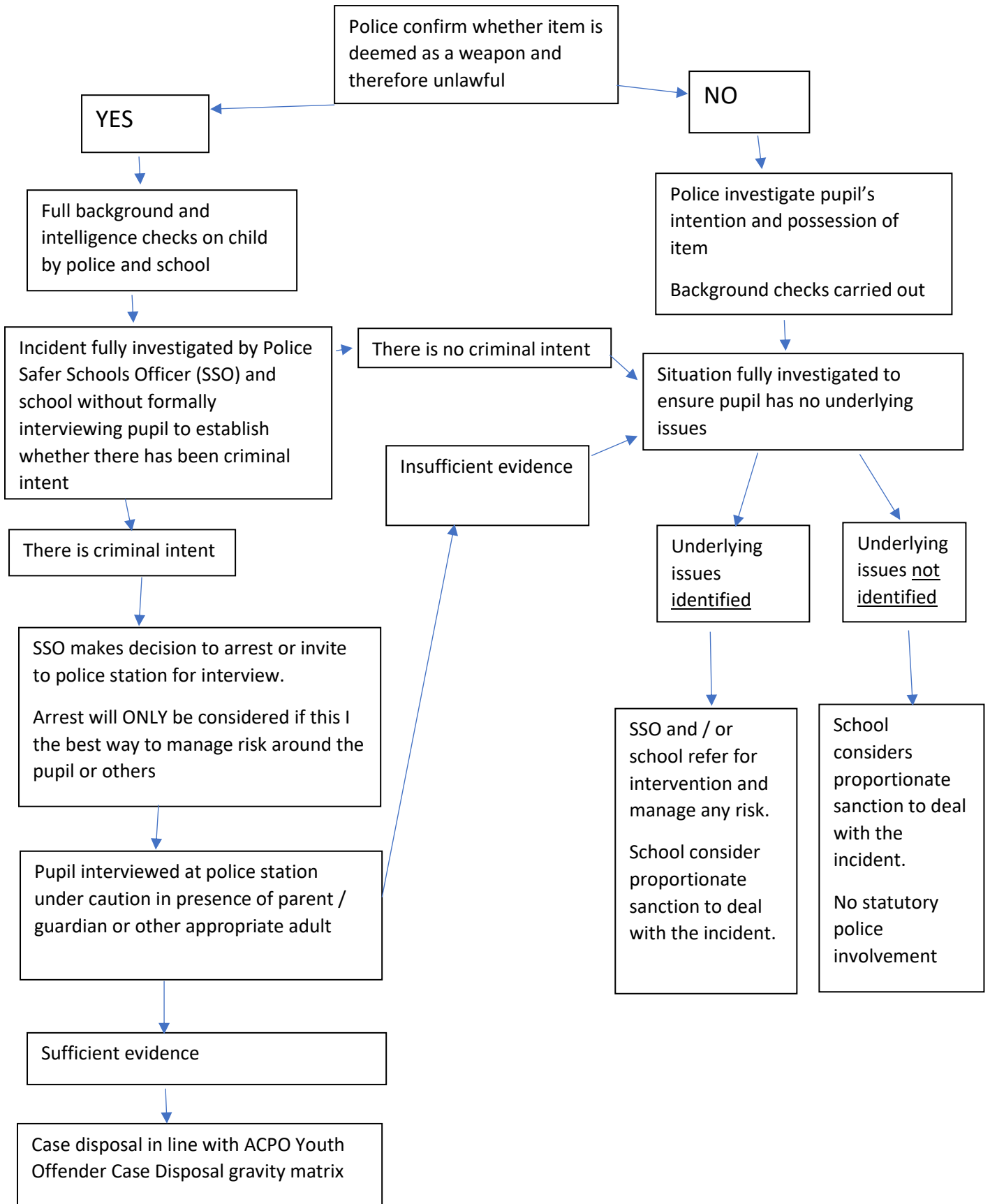
The following flow charts explain the processes for schools in relation to different aspects of serious youth violence and knife crime:

Flow Chart A – pupil has a weapon or is believed to have a weapon

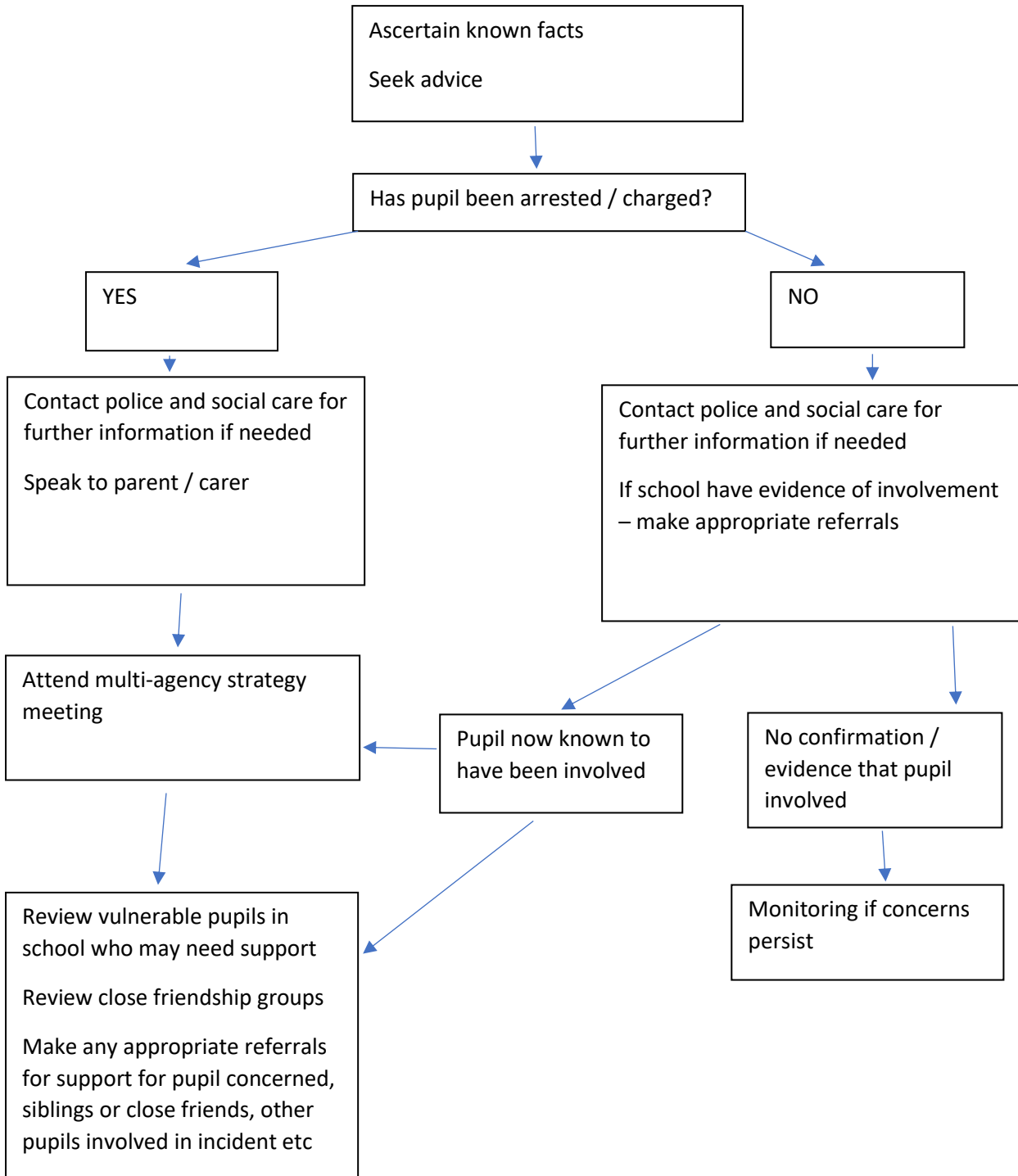


\*Please note: if a weapon is being secured it is important that it is not directly touched if possible. Police can supply a kit box with weapons tubes, gloves etc. Locations may also need to be searched in case a weapon has been secreted or ditched. Any pupil suspected of having a weapon should be closely monitored until search can take place.

Flow Chart B - actions police will take once informed of a school related weapon incident



Flow Chart C – pupil is suspected of being the perpetrator of serious youth violence/ arrested for serious offence



Flow Chart D – a pupil (or young person with close ties to a pupil) at the school is victim of serious violence / knife crime

